

## User manual for Bandsaw



Created/edited by	Version	Date
Stephen Street /Diana Thomas-McEwen	V1	12/09/2016

## Table of Contents

1.0	Machine Familiarisation .....	2
1.1	Machine Front .....	2
1.2	Machine back.....	3
2.0	Machine checks .....	3
3.0	Using the Bandsaw .....	4
3.1	Manual use .....	4
3.2	Power feed .....	5
	Appendix A- Trouble shooting .....	6
	NOTES.....	7

# Bandsaw User Manual

## 1.0 Machine Familiarisation

A bandsaw uses a blade consisting of a continuous band of toothed metal rotating on opposing wheels to cut material. They are used principally in woodworking and a variety of materials. Advantages include uniform cutting action as a result of an evenly distributed tooth load, and the ability to cut irregular or curved shapes like a jigsaw. The minimum radius of a curve is determined by the width of the band and its kerf. This bandsaw has three wheels connected by a belt or chain rotating in the same plane, turning in a clockwise direction.

### 1.1 Machine Front

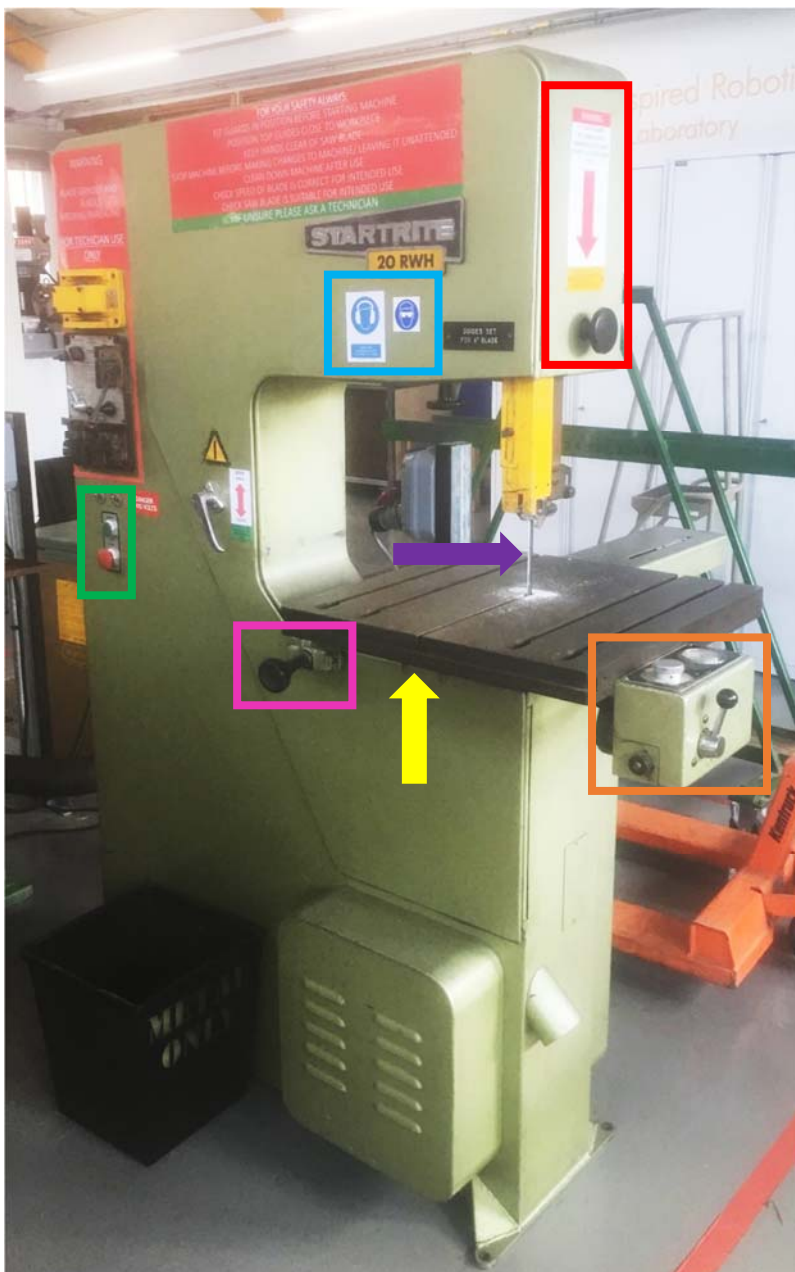


**WARNING: DO NOT OPEN the front of the bandsaw, for technicians only.**

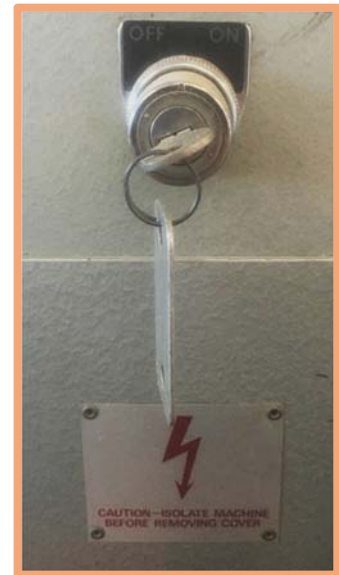
**NOTE:** The parts highlighted by coloured arrows and boxes are defined on in section 2.0 and 3.0.

**WARNING:** If you have not used the bandsaw before or do not feel comfortable using it please, seek assistance from a member of staff.

**WARNING:** Make sure that you observe the correct use of ALL PPE.



## 1.2 Machine back

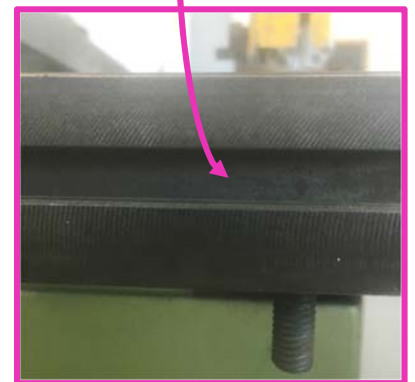


**NOTE:** Find an appropriate member of staff to get the bandsaw *unlocked at the back of the machine.*

## 2.0 Machine checks

Please check the machine **before turning on**

- Check that the **switch on** the back of the machine is turned to on (and the machine is *un-locked and turned on at the main power outlet*).
- Check that the correct **blade** is in the bandsaw and that the blade is the correct way round so that the teeth are facing you and pointing downwards.
- Check and set the height of the top guide and guard by **using the round black handle** on the right hand side of the bandsaw. Set the height so that the workpiece will fit through, without leaving too big a gap between the workpiece and the guard.
- Make sure the correct distance has been set between the **blade** and the **fence**, ensuring that the **fence** is located securely in the **T-slot** and bolts done up tight.



### 3.0 Using the Bandsaw

#### 3.1 Manual use

- Stand in front of the bandsaw so that you are facing the blade (the side of the machine with the door handle is the front).
- Press the green **START** button to the left of the bed, with the workpiece well clear of the **blade**.
- Ensure that the workpiece is pressed tightly on to the bed of the bandsaw and the **fence**.
- Slowly and smoothly move the workpiece along the **fence** towards the **blade**, making sure to **keep fingers clear** of the blade (readjust hand positions if needed).
- Once you have completed your cut then carefully reach over with your left hand and press the red **STOP** button.
- Take the workpiece off the bed as well as the stock/scrap. Dispose of any waste correctly. Brush down the bandsaw.



**WARNING: Beware of sharp edges on cut metal.**

## 3.2 Power feed



Alternatively, you can use the power feed on the bandsaw bed to cut in straight lines.

If you are going to use this method for cutting material, then you must:

a. Clamp the material down using bed clamps and the **T-slot** in the bed of the bandsaw.

- b. Use the lever on the right hand side of the bed for forwards and backwards movement and use the circular **dial 'o' set the feed rate** (0- 20), the dial above will show the work pressure.
- c. This method of cutting will only allow you to cut in linear movements.

**NOTE:** Whichever way you choose to cut material on the bandsaw, (by hand or by using the power feed) be aware that you are not necessarily going to get a straight cut as the blade will tend to wander.

**WARNING:** If you are after a precision cut then the bandsaw will not give you one. It is designed for cutting material into manageable sizes.



## Appendix A- Trouble shooting

**Problem:** No power to the machine

**Solution:** Check both the mains output is unlocked and turned on at the key switch on the back of the machine, before using the button switch to turn on the machine.

**WARNING:** For all other problems please seek a technician.

## NOTES